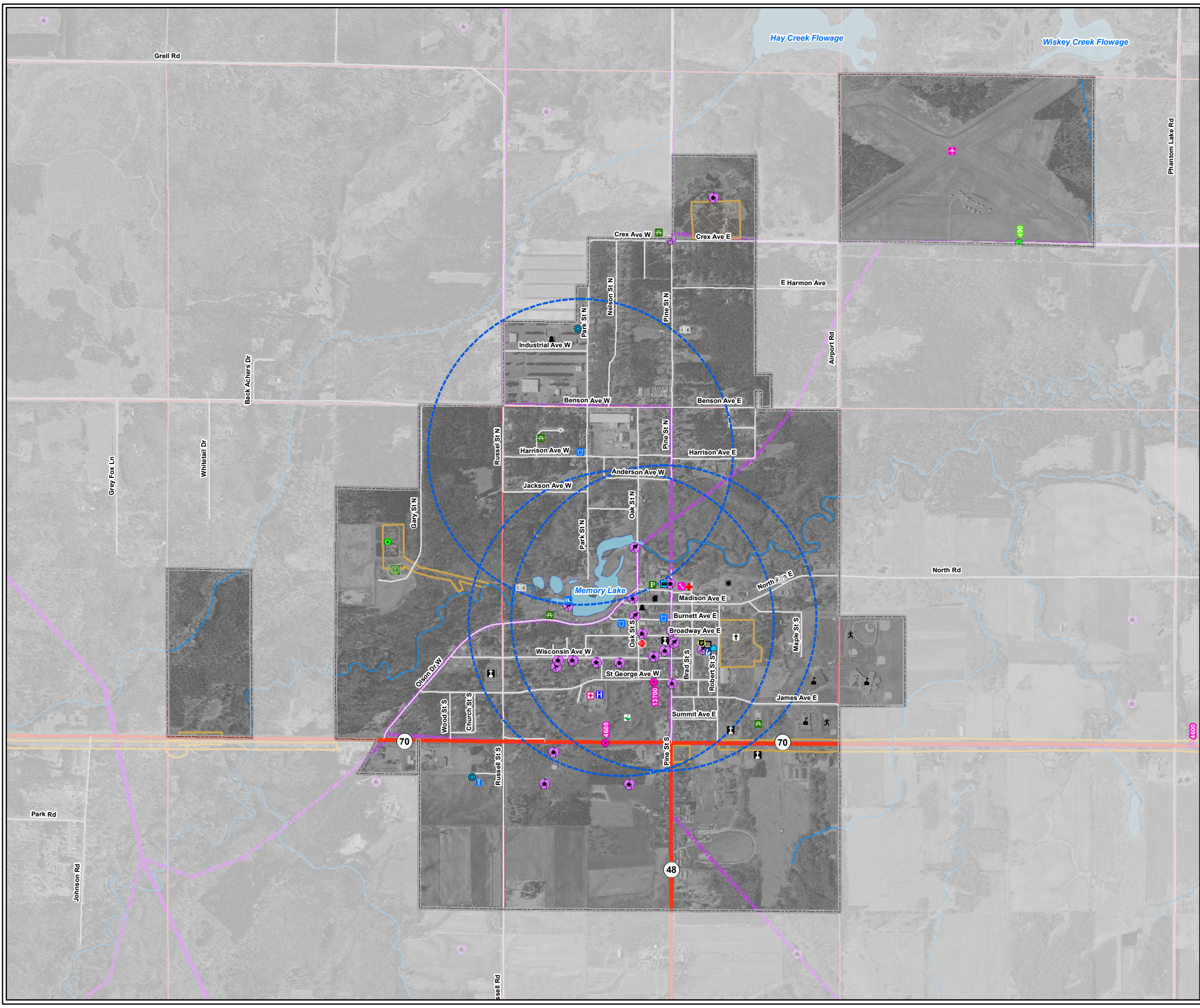


MAP 4 - 1 COMMUNITY FEATURES VILLAGE OF GRANTSBURG Burnett County, Wisconsin



Legend

Base Layers

- State Highway
- County Highway
- Town Road
- Rivers
- Lakes
- PLSS Sections
- Village Boundary
- Town Boundary
- County Boundary
- Wellhead Protection Area (2,400 foot radius from well)

Historic Sites

- Log Camps
- Historic Bridges
- Architecture and Historic Inventory
- Ferry Crossing
- Burnett Co Firsts
- Historical Roads
- Archaeological Site Inventory
- Bibliography of Archaeological Reports

Annual Average Daily Traffic

- Annual Average Daily Traffic 2002
- Annual Average Daily Traffic 2007

Community and Facilities

- Town/Village Hall
- EMS/Ambulance
- Fire Station
- Library
- Police
- Boat Launch
- Indoor Public Facility
- Park
- Golf
- Airport
- Cemetery
- Church
- Community Center
- Daycare
- Health Care Clinic
- Public Parking
- Recycling Center
- School Athletic Facility
- School - Public
- Senior Center
- Dam
- WW Treatment Plant
- Lift Station
- Substation
- Telephone Utility
- Tower - Communication
- Water Tower
- Public Well
- Utility Shop/Office
- Hospital
- Post Office

Source: Division of Historic Preservation at the State Historical Society of Wisconsin, Wisconsin DOT and Burnett Co Land Information Office. Historical data shown is a depiction of information taken from various sources of diverse quality. This drawing is neither a legally recorded map nor a survey and is not intended to be used as one. This drawing is a compilation of records, information and data used for reference purposes only.