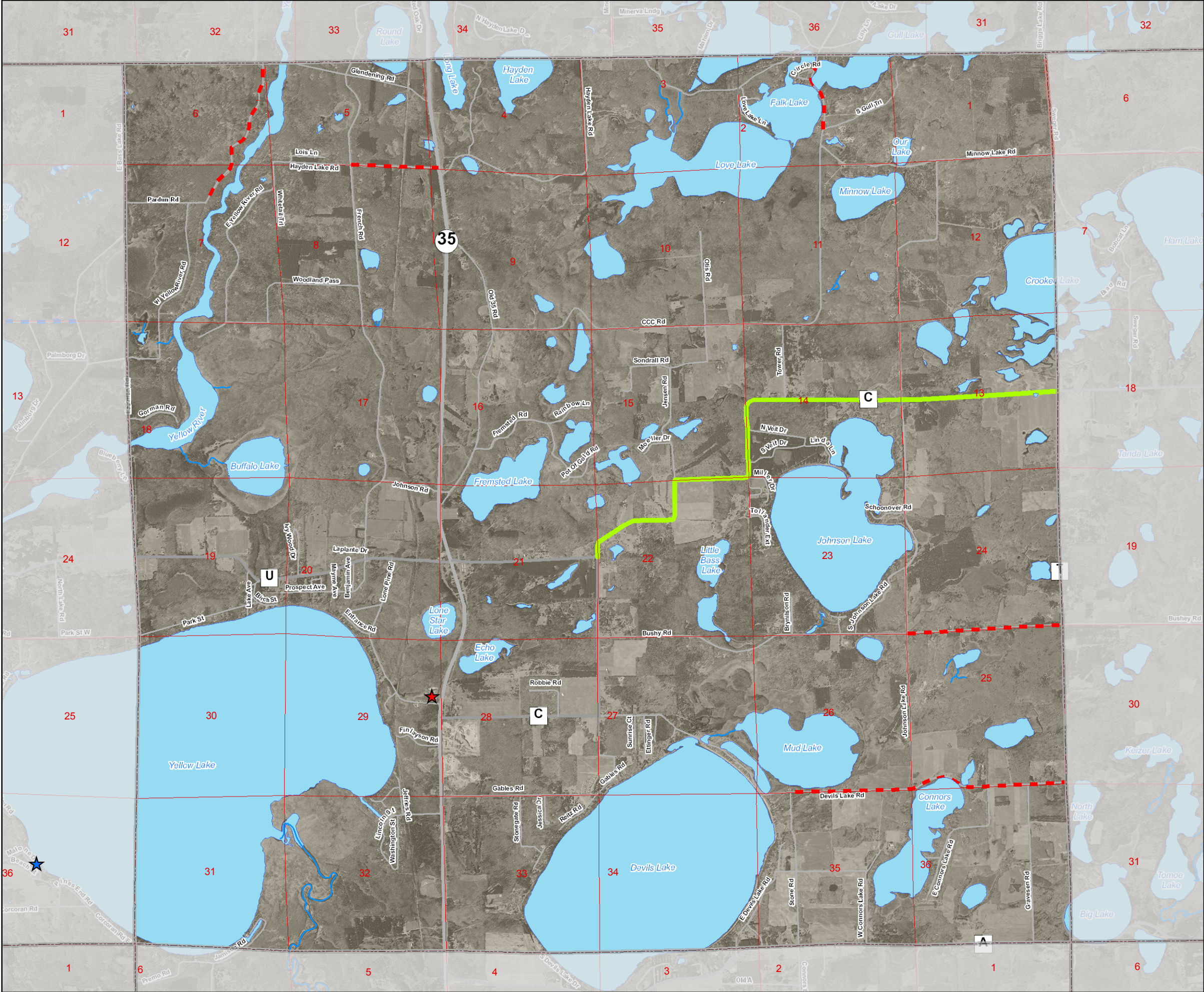


MAP 4 - 2
PLANNED COMMUNITY
FACILITY AND
TRANSPORTATION
IMPROVEMENTS
TOWN OF OAKLAND
Burnett County,
Wisconsin



Legend

Base Layers

- State Highway
- County Highway
- Town Road
- Rivers
- Lakes
- PLSS Sections
- Village Boundary
- Township Boundary
- County Boundary

Planned Improvements

Local Plans

Short Term (1-5 yrs)

- Community Facility Improvement
- New Road
- Reconstruct Road
- Repair Road

Long Term (6-20 yrs)

- Community Facility Improvement
- New Road
- Reconstruct Road
- Repair Road

County Plans

- County Facility Improvement
- Other Transportation Project
- New Road
- Reconstruct Road
- Repair Road

State Plans

- New Road
- Reconstruct Road
- Repair Road

Utility Service Areas

- Existing Sanitary Sewer Service Area

This map displays data regarding planned physical improvements. This map works together with the text of the Utilities and Community Facilities and Transportation elements of the Comprehensive Plan. Nothing on this map commits the community to a particular road, utility, or community facility improvement project, but rather shows the overall plan for potential physical improvements at the time of comprehensive plan adoption.

This map can be used as a reference for comprehensive planning purposes. This map can be used as a guide when making decisions regarding land use and the coordination of growth with infrastructure conditions and improvements. Strategic plans such as park and recreation plans, capital improvement plans, transportation plans, and the like, should be consistent with this map or used to update this map. This map can be used as a reference to monitor community growth and change to determine whether the comprehensive plan has been effectively implemented.

Source: Burnett County

0 1,600 3,200

Feet



Foth Infrastructure & Environment, LLC

X:\GB\IE\2008\08B042\GIS\mxd\planned\burnett_co_oakland_planned.mxd
December 28, 2009 Drawn by: DAT Checked by: JDW