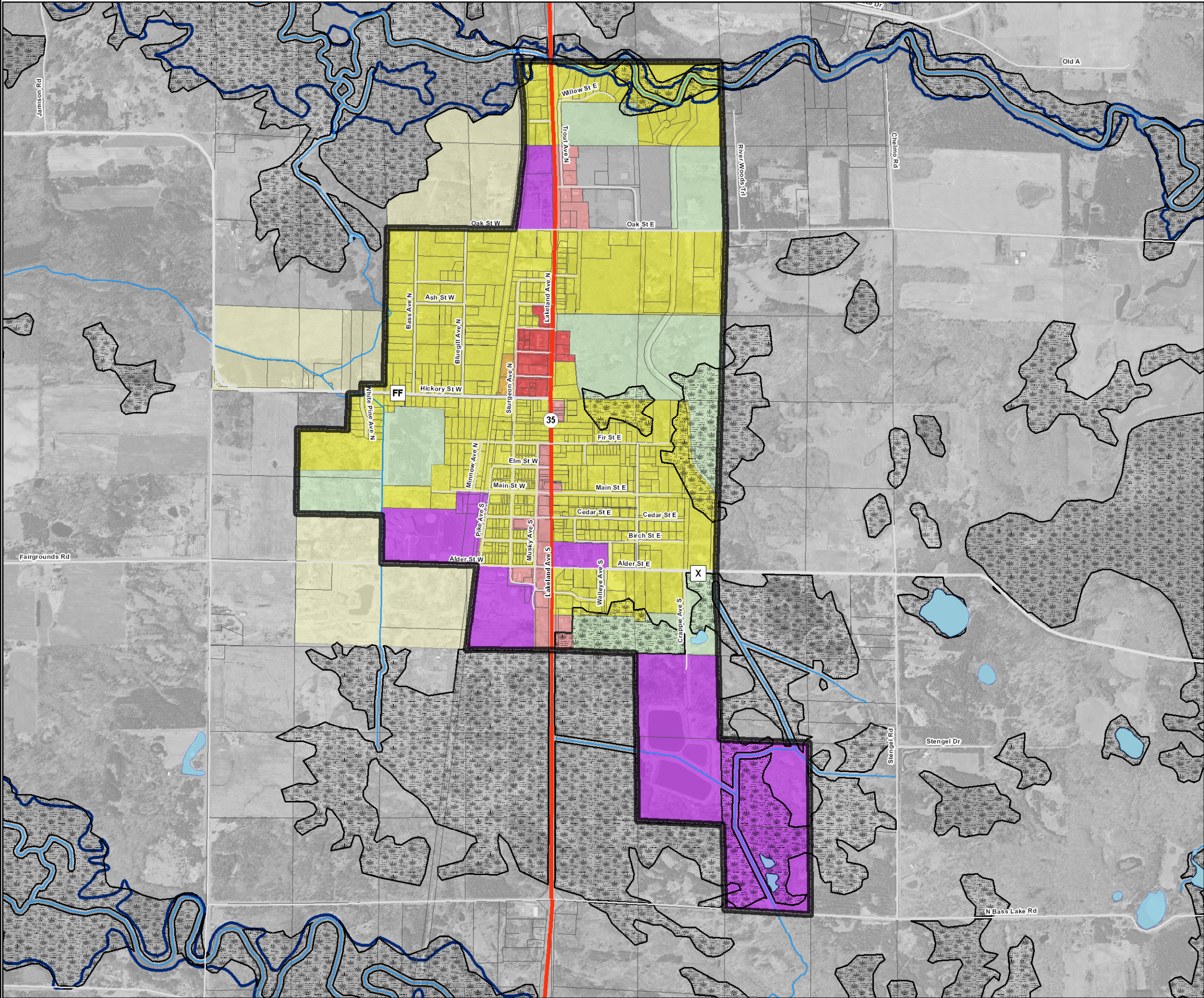


MAP 8 - 2
FUTURE LAND USE
VILLAGE OF GRANTSBURG
Burnett County,
Wisconsin



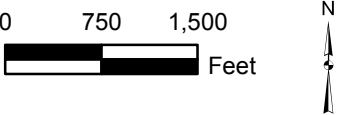
Legend

- State Highway
- County Highway
- Town Road
- Rivers
- Lakes
- Parcels
- Flood Hazard Area
- Wetlands
- Village Boundary

Future Land Use

- Single and Two Family Residential
- Mobile Home Park
- Community Downtown Commercial
- General Commercial
- Government/Institutional
- Industrial
- Development Reserve
- Residential Expansion

Source: Wisconsin DNR and Burnett Co Land Information Office



X:\GB\IE\2008\08B042\GIS\mxd\flu\burnett_co_webster_flu.mxd
May 27, 2010 Drawn by: DAT Checked by: JDW