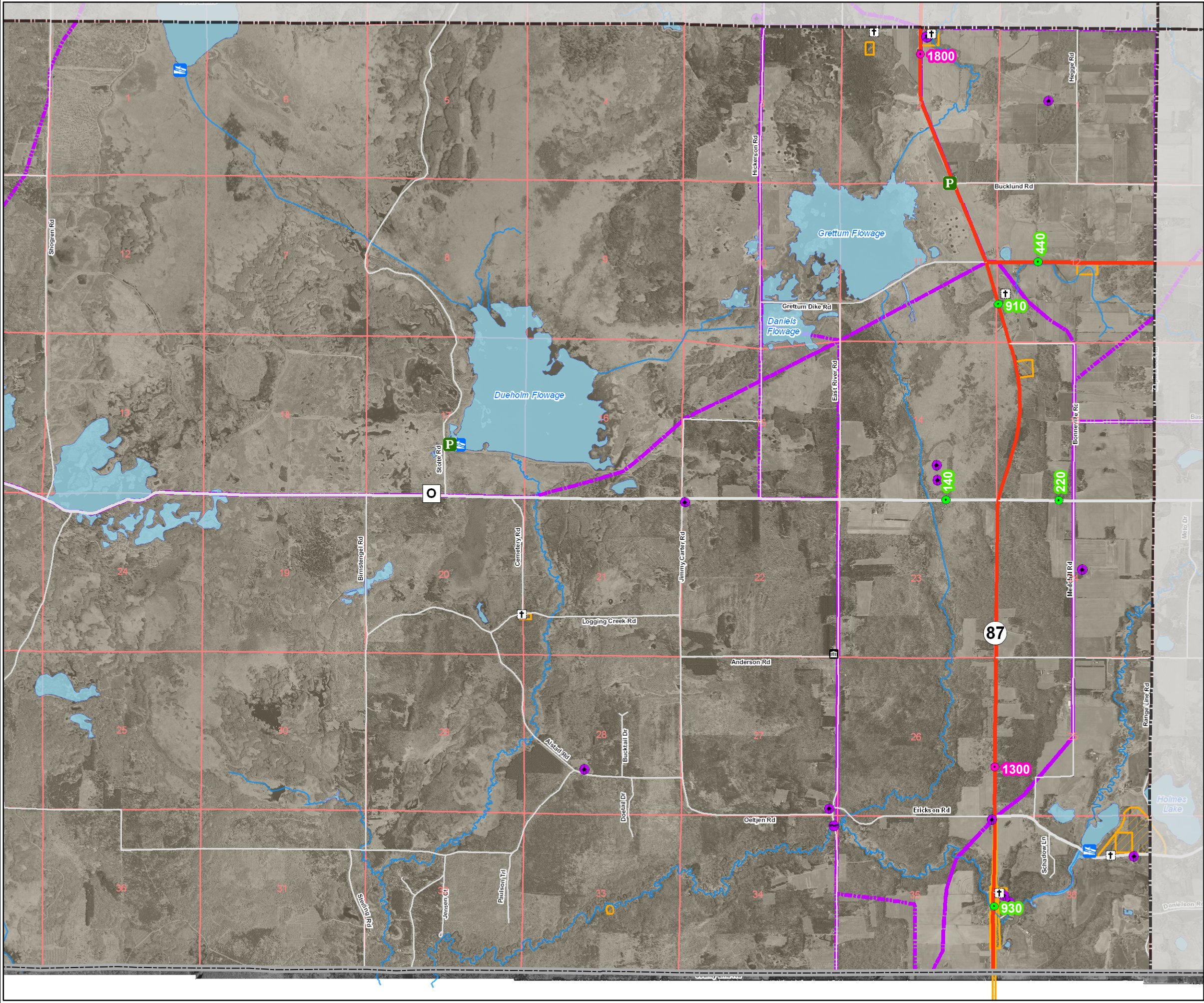


MAP 4 - 1  
COMMUNITY FEATURES  
TOWN OF ANDERSON  
Burnett County,  
Wisconsin



**Legend**

**Base Layers**

- State Highway
- County Highway
- Town Road
- Rivers
- Lakes
- PLSS Sections
- Village Boundary
- Township Boundary
- County Boundary

**Historic Sites**

- Log Camps
- Historic Bridges
- Architecture and Historic Inventory
- Ferry Crossing
- Burnett Co Firsts
- Historical Roads
- Archaeological Site Inventory
- Bibliography of Archaeological Reports

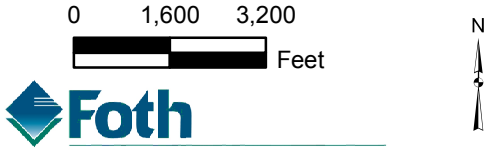
**Annual Average Daily Traffic**

- Annual Average Daily Traffic 2002
- Annual Average Daily Traffic 2007

**Community Facilities**

- Town/Village Hall
- EMS/Ambulance
- Fire Station
- Library
- Police
- Boat Launch
- Indoor Public Facility
- Park
- Golf
- Airport
- Cemetery
- Church
- Community Center
- Daycare
- Health Care Clinic
- Public Parking
- Recycling Center
- School Athletic Facility
- School - Public
- Senior Center
- Dam
- WW Treatment Plant
- Lift Station
- Substation
- Telephone Utility
- Tower - Communication
- Water Tower
- Public Well
- Utility Shop/Office

Source: Division of Historic Preservation at the State Historical Society of Wisconsin, Wisconsin DOT and Burnett Co Land Information Office. Historical data shown is a depiction of information taken from various sources of diverse quality. This drawing is neither a legally recorded map nor a survey and is not intended to be used as one. This drawing is a compilation of records, information and data used for reference purposes only.



**Foth**  
Foth Infrastructure & Environment, LLC

X:\GB\IE\Client Data\BurnettCo\mxd\cs\burnett\_co\_anderson1\_cfs\_his\_trans.mxd  
December 12, 2009 Drawn by: DAT Checked by: JDW