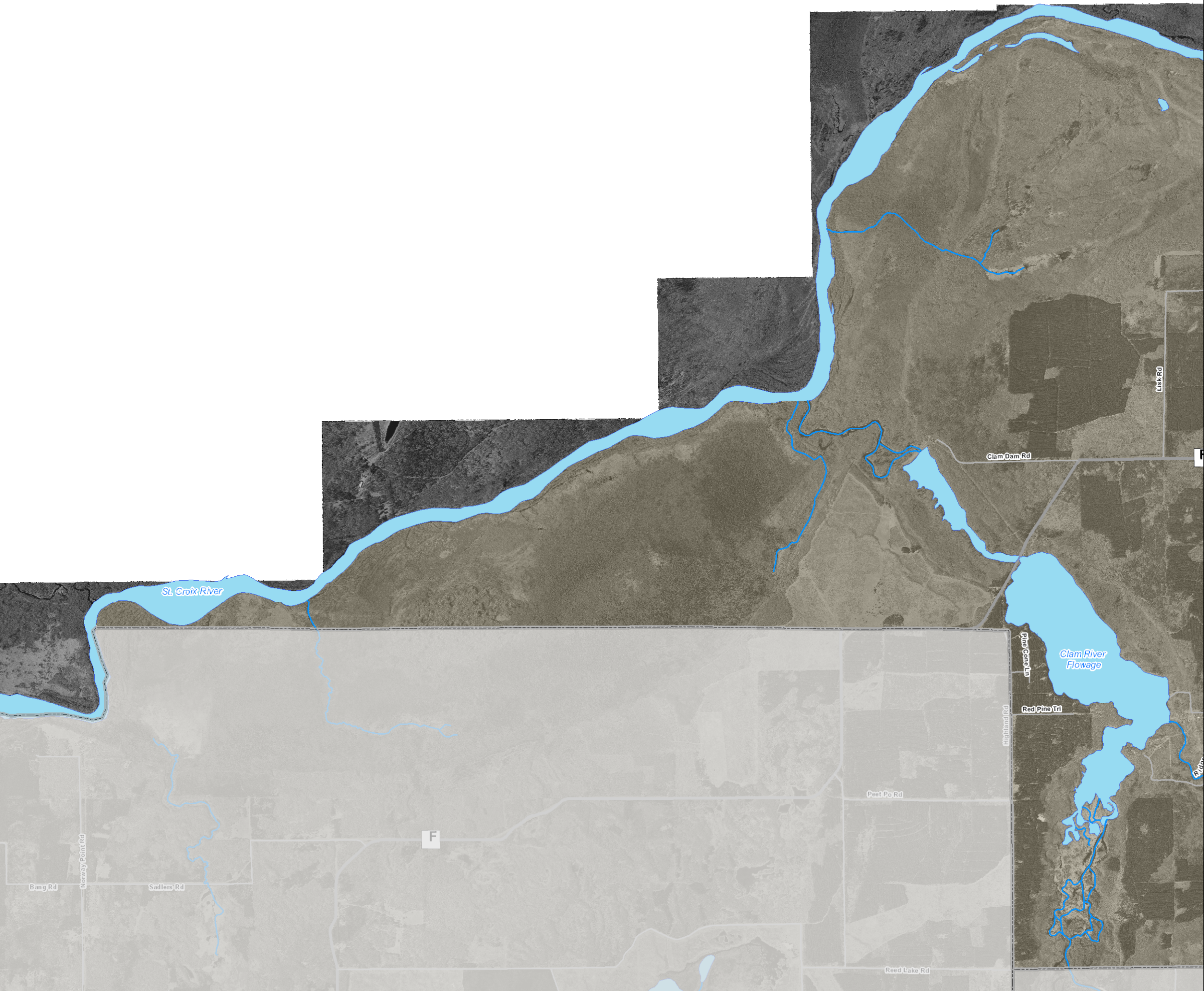


MAP 4 - 2  
PLANNED UTILITIES,  
COMMUNITY FACILITIES  
AND TRANSPORTATION  
TOWN OF UNION  
Burnett County,  
Wisconsin



**Legend**

**Base Layers**

- State Highway
- County Highway
- Township Road
- Rivers
- Lakes
- PLSS Sections
- Villages
- Townships
- County Boundary

**Planned Improvements**

Local Plans

Short Term (1-5 yrs)

- Community Facility Improvement
- New Road
- Reconstruct Road
- Repair Road

Long Term (6-20 yrs)

- Community Facility Improvement
- New Road
- Reconstruct Road
- Repair Road

County Plans

- County Facility Improvement
- Other Transportation Project
- New Road
- Reconstruct Road
- Repair Road

State Plans

- New Road
- Reconstruct Road
- Repair Road

Utility Service Areas

- Existing Sanitary Sewer Service Area

This map displays data regarding planned physical improvements. This map works together with the text of the Utilities and Community Facilities and Transportation elements of the Comprehensive Plan. Nothing on this map commits the community to a particular road, utility, or community facility improvement project, but rather shows the overall plan for potential physical improvements at the time of comprehensive plan adoption.

This map can be used as a reference for comprehensive planning purposes. This map can be used as a guide when making decisions regarding land use and the coordination of growth with infrastructure conditions and improvements. Strategic plans such as park and recreation plans, capital improvement plans, transportation plans, and the like, should be consistent with this map or used to update this map. This map can be used as a reference to monitor community growth and change to determine whether the comprehensive plan has been effectively implemented.

Source: Burnett County

