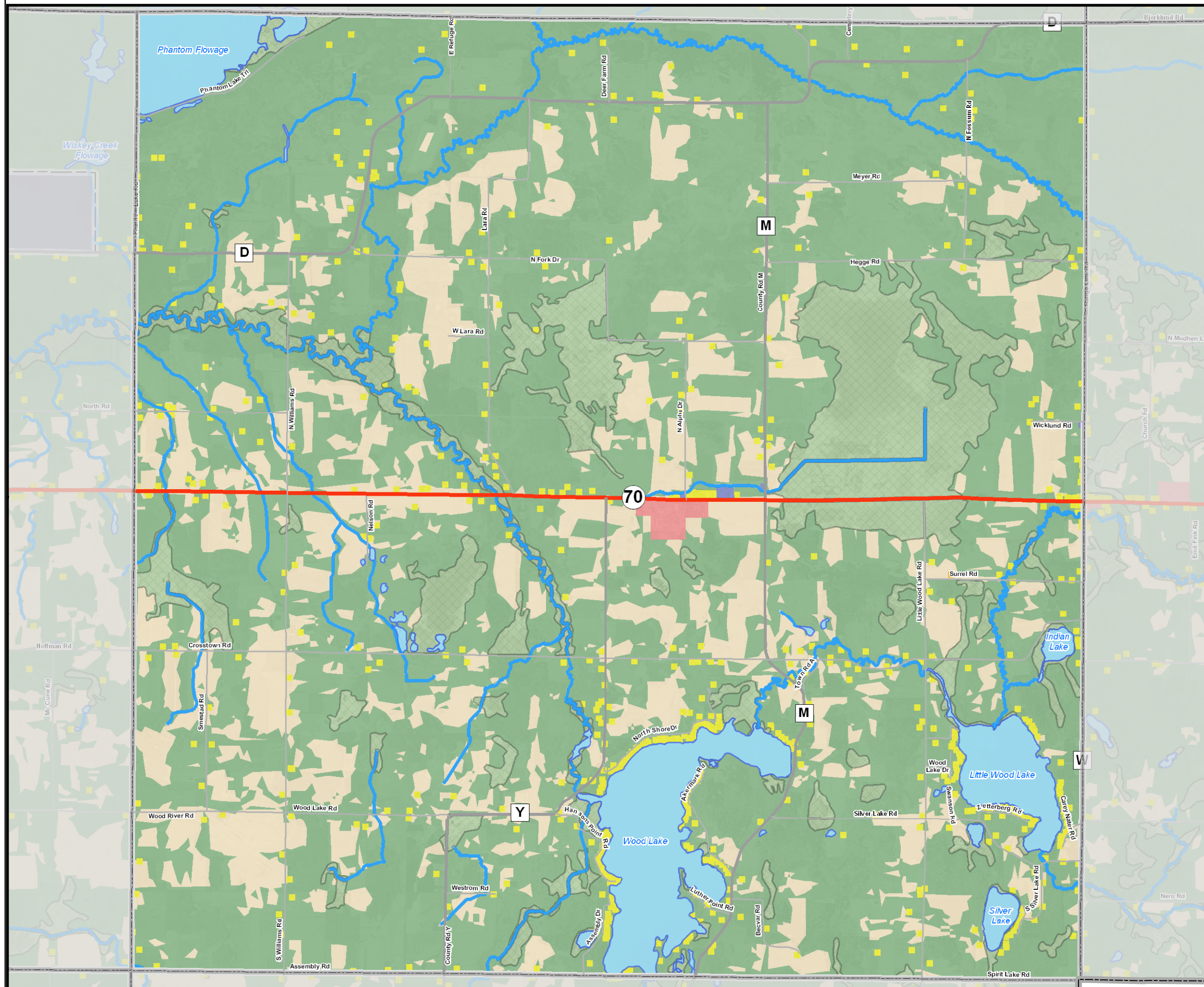
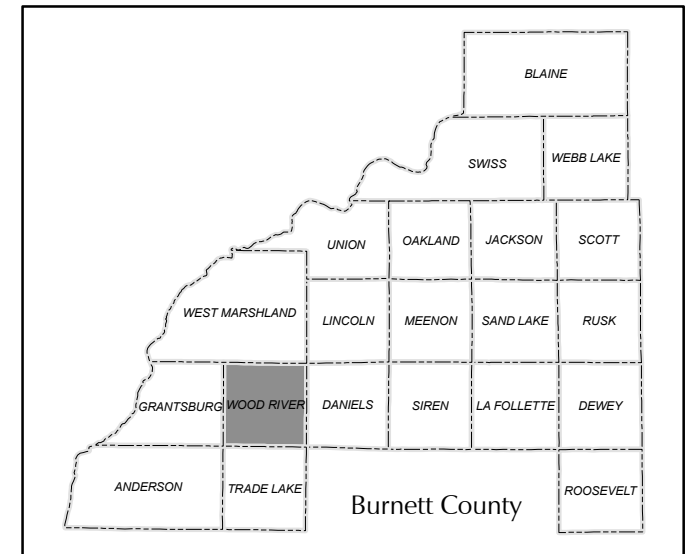


MAP 8 - 1

EXISTING LAND USE

TOWN OF WOOD RIVER

Burnett County,
Wisconsin



Legend

- State Highway
- County Highway
- Town Road
- Rivers
- Lakes
- Wetlands
- Village Boundary
- Town Boundary
- County Boundary

Existing Land Use

- Single Family Residential
- Multi Family Residential
- Commercial
- Industrial
- Government/Institutional/Utilities
- Agriculture
- Forests and Open Space
- Parks and Recreation

This drawing is neither a legally recorded map nor a survey and is not intended to be used as one. This drawing is a compilation of records, information and data used for reference purposes only.

Source: Wisconsin DOT and Burnett Co Land Information Office

0 1,600 3,200
Feet

Foth
Foth Infrastructure & Environment, LLC

X:/CB/IE/2008/08B042/GIS/mxd/exlu/burnett_co_wood_river_exlu.mxd
December 10, 2009 Drawn by: DAT Checked by: JDW